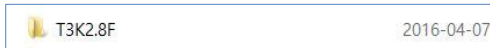
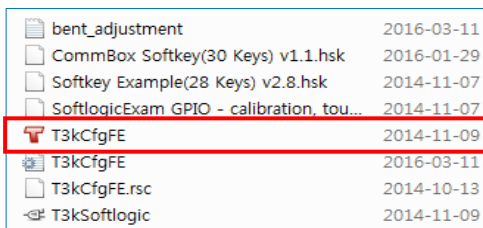


Guide for adjusting camera sensors

1. Open T2K2.8F > 2.8F-Win > manual > FactoryEdition



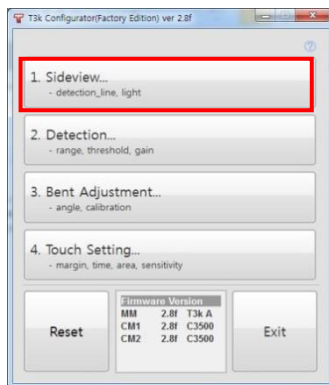
4. Click "T3kCfgFE" file marked in red.



5. Sideview

(⚠ Please use the mouse to manage the program in this part. Touch function is not available in part 5.)

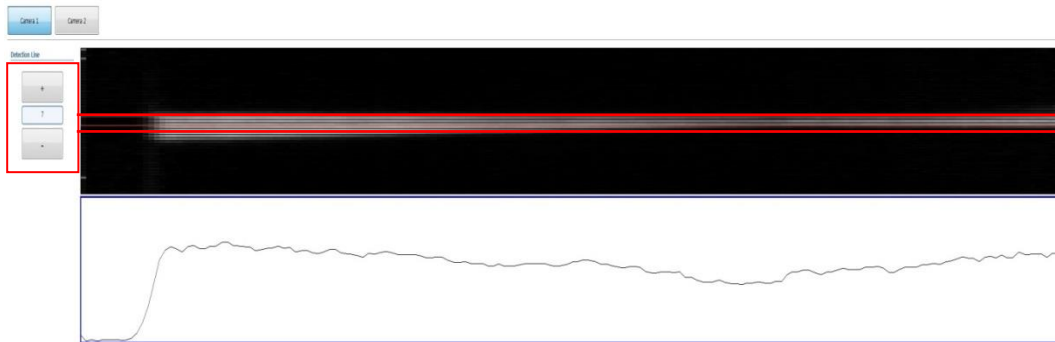
- 5-1) Click "1. Sideview..." button.



- 5-2) Click "Camera 1" on the top-left side.



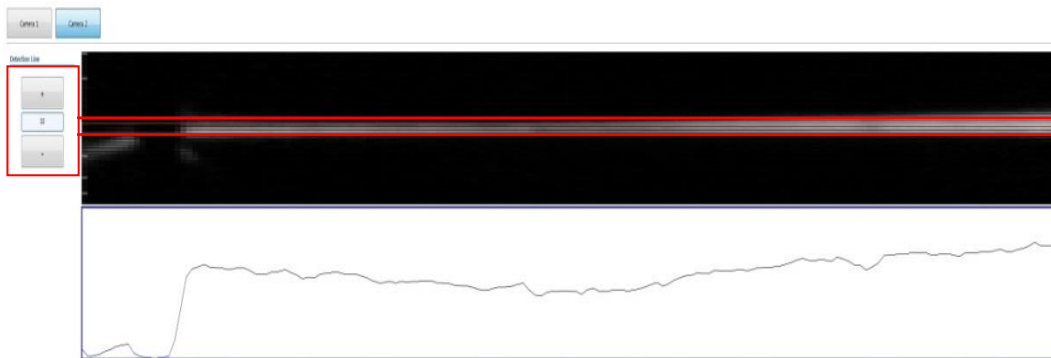
5-3) Adjust "Detection line" by click [+] or [-] on left side until the light grey line in the red zone.



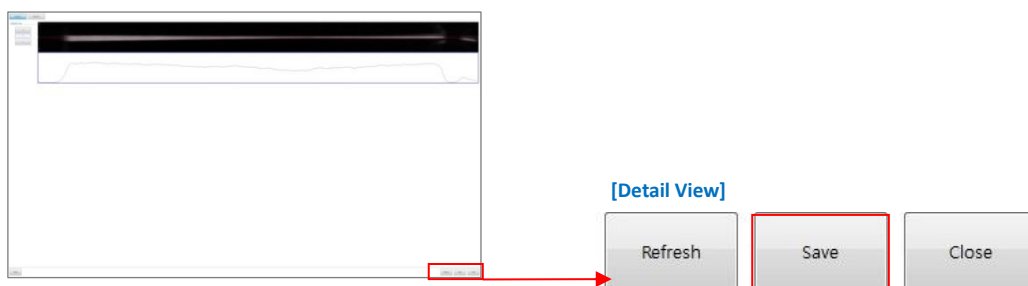
5-4) Click "Camera 2" on the top-left side.



5-5) Adjust "Detection line" same as 5-3).

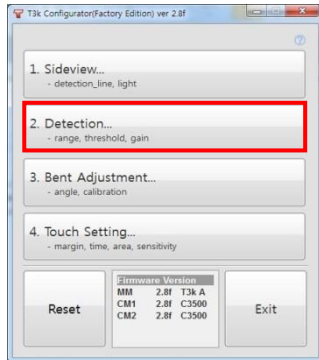


5-6) Click "Save", then part 5 is closed.

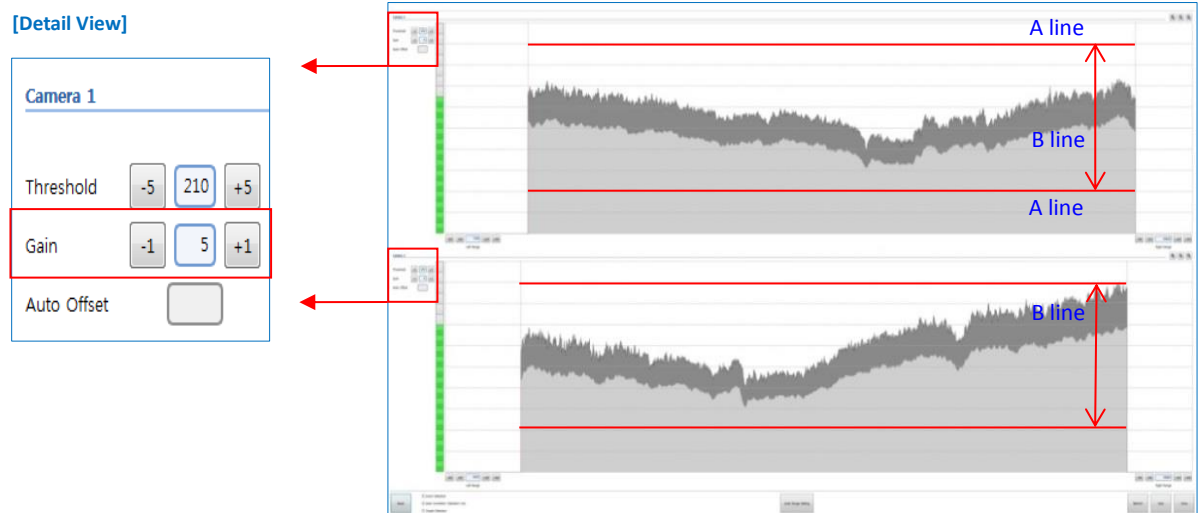


6. Detection (Touch function is available in part 6.)

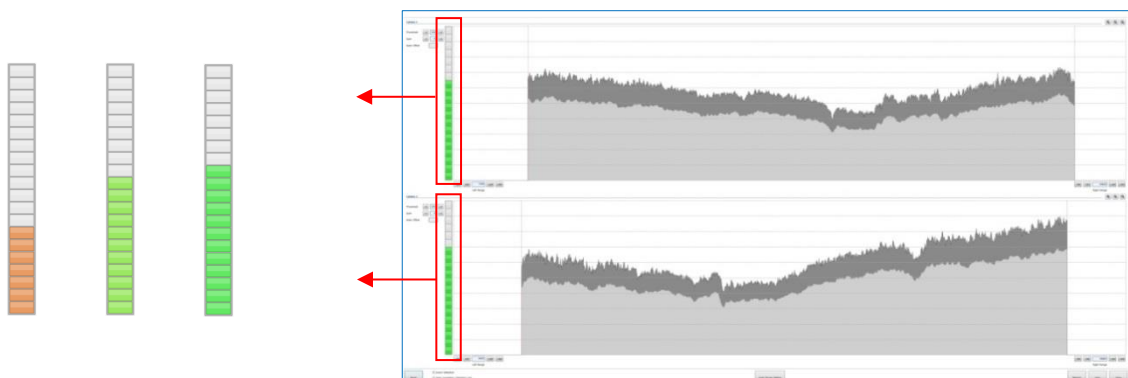
6-1) Click "Detection" button.



6-2) Adjust sensor wave by click [-1] or [+1] until sensor wave in the red zone
 (*Red zone: between A line and B line)



6-3) Check whether the bar color is green.



[Bad] [Normal] [Good]

6-4) Click "Save", then part 6 is closed.



Date: 13th, Apr. 2016